



Where Warmth Meets Innovation



**BELLA
Towel
Warmer
Catalogue
2024**

www.drad.com.tr





Construction Features

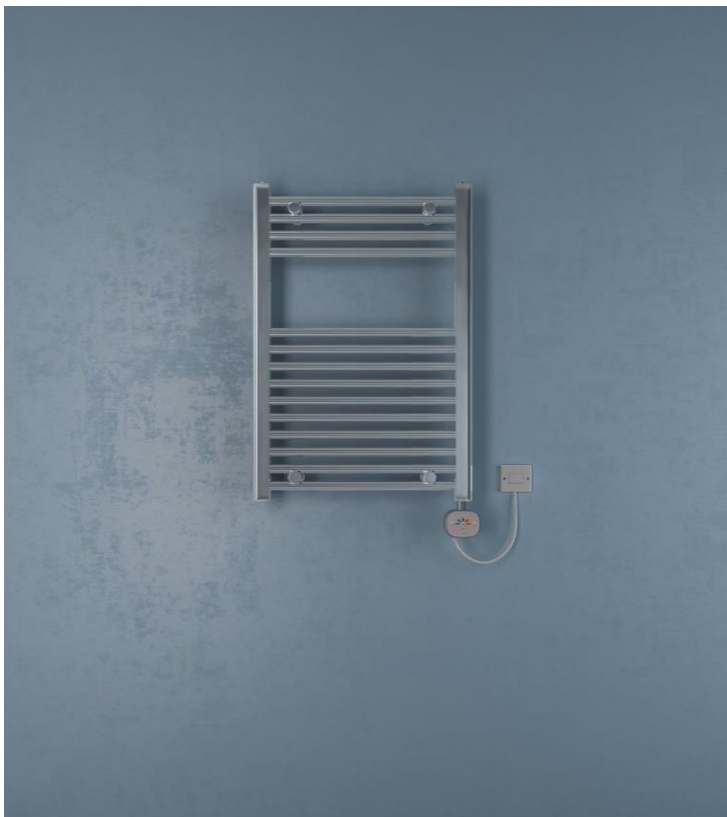
- * Horizontal round elements in sheet steel Diameter 22 mm.
- * Vertical D Shape collectors in sheet steel 30 x 40 mm.
- * Collector threading 1/2" Gas right.
- * Can be single, dual fuel or all electric.
- * Maximum working pressure 10 bar.
- * Maximum working temperature 95 °C
- * Connection center from wall is 64 mm.
- * Depth is 79 mm.
- * Not suitable for installation with a single pipe system.



Electrical BELLA 500 x 800 Towel Warmer with EHT-LC



Electrical BELLA 500 x 800 Towel Warmer with EHT-DC



Electrical BELLA 500 x 800 Towel Warmer with EHT-AC



Electrical BELLA 500 x 800 Towel Warmer with Standard Cable Heating Element







Electrical BELLA 500 x 1200 Towel Warmer with EHT-LC



Electrical BELLA 500 x 1200 Towel Warmer with EHT-DC

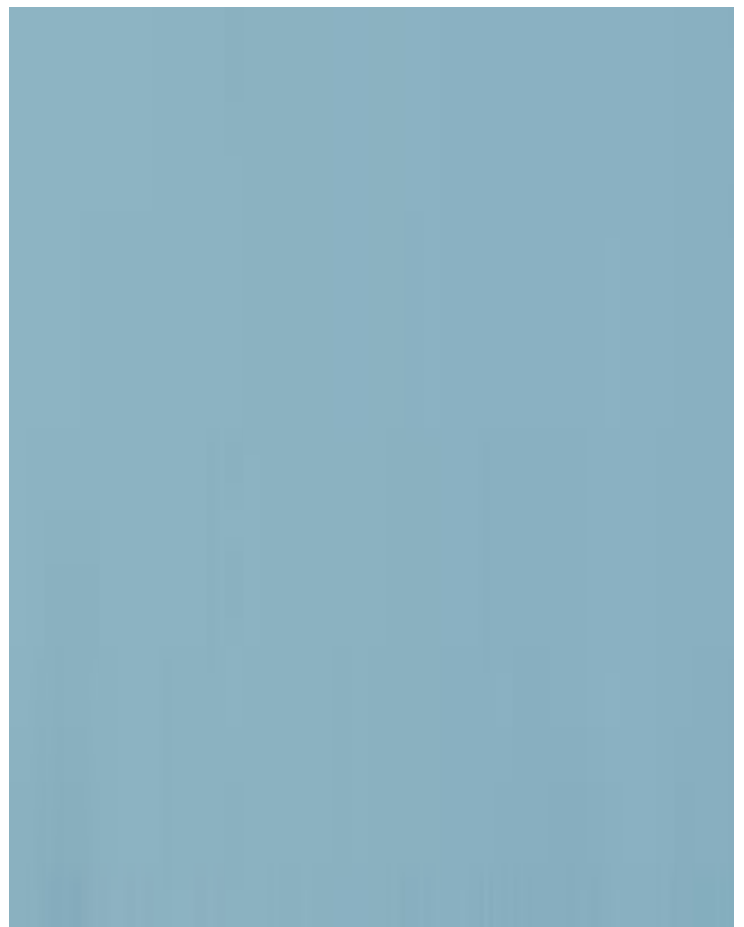


Electrical BELLA 500 x 1200 Towel Warmer with EHT-AC



Electrical BELLA 500 x 1200 Towel Warmer with Standard Cable Heating Element







Electrical BELLA 500 x 1800 Towel Warmer with EHT-LC



Electrical BELLA 500 x 1800 Towel Warmer with EHT-DC

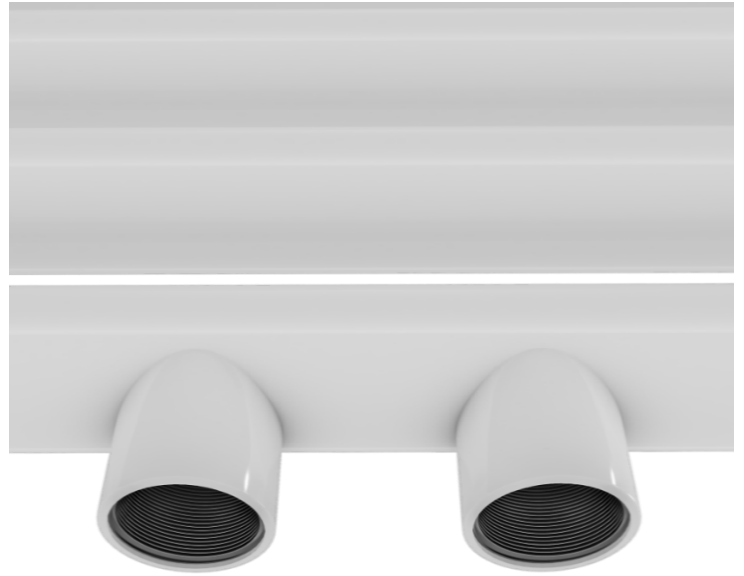


Electrical BELLA 500 x 1800 Towel Warmer with EHT-AC

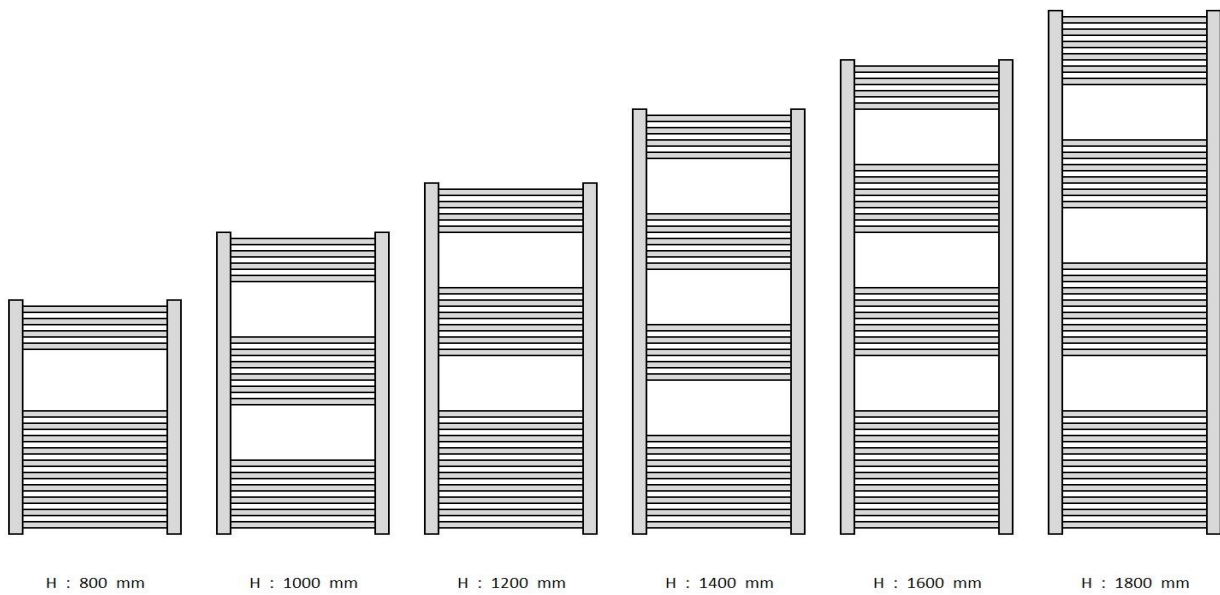


Electrical BELLA 500 x 1800 Towel Warmer with Standard Cable Heating Element

Mid Connection 50 mm.



					
Texture Black RAL 9005	Texture Anthracite 7946	Texture Anthracite 7766	Texture Grey RAL 7040	Texture White RAL 9016	Texture Cappuccino 1229



BELLA Towel Warmer

Chrome

Width	Height	Horizontal Inlet Outlet	Water	Heat	Heat	Heat	Heat	Heat	Km	Exponent
(mm)	(mm)	Pipe Distance Quantity (Axis)	Content (Lt)	Output Δt 70 (watts)	Output Δt 60 (watts)	Output Δt 50 (watts)	Output Δt 30 (watts)	Output Δt 25 (watts)		(n)
300	600	10 255	1,9	159	131	105	56	44	0,8207	1,2394
300	800	14 255	2,6	207	171	136	72	57	1,0100	1,2530
300	1000	16 255	3,0	258	212	168	88	70	1,1865	1,2666
300	1200	20 255	3,9	312	256	203	105	83	1,3533	1,2802
300	1400	22 255	4,3	369	302	239	123	97	1,5125	1,2938
300	1600	26 255	5,1	431	352	277	142	112	1,6655	1,3075
300	1800	30 255	5,6	497	405	318	162	127	1,8133	1,3211
400	600	10 355	2,2	202	167	133	71	56	1,0412	1,2394
400	800	14 355	3,1	263	217	172	91	72	1,2814	1,2530
400	1000	16 355	3,7	327	269	214	112	89	1,5052	1,2666
400	1200	20 355	4,5	395	324	257	134	106	1,7169	1,2802
400	1400	22 355	5,1	468	383	303	156	124	1,9188	1,2938
400	1600	26 355	5,9	546	446	352	180	142	2,1129	1,3075
400	1800	30 355	6,7	630	514	404	206	162	2,3004	1,3211
500	600	10 455	2,5	242	200	160	85	68	1,2522	1,2394
500	800	14 455	3,5	316	261	207	109	87	1,5411	1,2530
500	1000	16 455	4,1	393	324	257	135	107	1,8103	1,2666
500	1200	20 455	5,1	475	390	309	161	127	2,0648	1,2802
500	1400	22 455	5,7	563	461	364	188	149	2,3078	1,2938
500	1600	26 455	6,7	657	537	423	217	171	2,5412	1,3075
500	1800	30 455	7,6	758	618	486	247	194	2,7666	1,3211
600	600	10 555	2,8	282	233	186	99	79	1,4560	1,2394
600	800	14 555	3,9	367	303	241	127	101	1,7919	1,2530
600	1000	16 555	4,6	457	376	299	156	124	2,1049	1,2666
600	1200	20 555	5,7	553	454	359	187	148	2,4009	1,2802
600	1400	22 555	6,4	654	536	424	219	173	2,6834	1,2938
600	1600	26 555	7,5	764	624	492	252	199	2,9548	1,3075
600	1800	30 555	8,5	881	719	565	288	226	3,2169	1,3211
700	600	10 655	3,2	320	264	211	112	89	1,6540	1,2394
700	800	14 655	4,4	417	344	274	144	115	2,0355	1,2530
700	1000	16 655	5,2	520	427	339	178	141	2,3912	1,2666
700	1200	20 655	6,4	628	515	408	212	168	2,7274	1,2802
700	1400	22 655	7,2	743	609	481	248	196	3,0482	1,2938
700	1600	26 655	8,4	868	709	559	287	226	3,3566	1,3075
700	1800	30 655	9,7	1.001	816	624	327	257	3,6543	1,3211
800	600	10 755	3,6	358	295	236	125	100	1,8471	1,2394
800	800	14 755	4,9	466	384	306	161	128	2,2732	1,2530
800	1000	16 755	5,8	580	477	379	198	157	2,6704	1,2666
800	1200	20 755	7,1	701	576	456	237	188	3,0458	1,2802
800	1400	22 755	8,0	830	680	537	277	219	3,4042	1,2938
800	1600	26 755	9,4	969	792	624	320	252	3,7485	1,3075
800	1800	30 755	10,7	1.118	912	716	365	287	4,0810	1,3211
1000	600	10 955	4,2	430	355	283	150	120	2,2215	1,2394
1000	800	14 955	5,8	561	462	368	194	154	2,7340	1,2530
1000	1000	16 955	6,8	698	574	456	239	189	3,2116	1,2666
1000	1200	20 955	8,4	843	692	548	285	226	3,6632	1,2802
1000	1400	22 955	9,4	998	818	646	334	264	4,0941	1,2938
1000	1600	26 955	11,0	1.165	952	750	385	303	4,5083	1,3075
1000	1800	30 955	12,6	1.344	1.096	862	439	345	4,9082	1,3211
1200	600	10 1155	4,8	500	413	330	175	140	2,5830	1,2394
1200	800	14 1155	6,7	652	537	428	226	179	3,1789	1,2530
1200	1000	16 1155	7,8	811	668	530	277	220	3,7343	1,2666
1200	1200	20 1155	9,6	980	805	637	331	262	4,2594	1,2802
1200	1400	22 1155	10,8	1.161	951	751	388	306	4,7605	1,2938
1200	1600	26 1155	12,6	1.355	1.108	873	447	353	5,2420	1,3075
1200	1800	30 1155	14,5	1.563	1.275	1.002	510	401	5,7070	1,3211

BELLA Towel Warmer

Powder Coated

Width	Height	Horizontal Inlet Outlet	Water	Heat	Heat	Heat	Heat	Heat	Km	Exponent
(mm)	(mm)	Pipe Distance Quantity (Axis)	Content (Lt)	Output Δt 70 (watts)	Output Δt 60 (watts)	Output Δt 50 (watts)	Output Δt 30 (watts)	Output Δt 25 (watts)		(n)
300	600	10 255	1,9	246	204	163	87	69	1,3225	1,2301
300	800	14 255	2,6	323	266	213	113	90	1,6658	1,2395
300	1000	16 255	3,0	402	331	264	139	111	1,9923	1,2489
300	1200	20 255	3,9	484	398	317	167	132	2,3061	1,2583
300	1400	22 255	4,3	570	468	372	195	154	2,6096	1,2677
300	1600	26 255	5,1	660	542	429	224	177	2,9047	1,2771
300	1800	30 255	5,6	755	619	490	254	201	3,1925	1,2865
400	600	10 355	2,2	311	257	206	110	88	1,6716	1,2301
400	800	14 355	3,1	408	337	269	143	114	2,1055	1,2395
400	1000	16 355	3,7	508	419	333	176	140	2,5183	1,2489
400	1200	20 355	4,5	611	503	400	210	167	2,9149	1,2583
400	1400	22 355	5,1	720	592	470	246	195	3,2985	1,2677
400	1600	26 355	5,9	834	685	543	283	224	3,6715	1,2771
400	1800	30 355	6,7	954	782	619	321	254	4,0353	1,2865
500	600	10 455	2,5	373	309	247	132	105	2,0047	1,2301
500	800	14 455	3,5	489	404	322	171	136	2,5251	1,2395
500	1000	16 455	4,1	609	502	400	211	168	3,0201	1,2489
500	1200	20 455	5,1	733	604	480	252	201	3,4957	1,2583
500	1400	22 455	5,7	864	710	564	295	234	3,9558	1,2677
500	1600	26 455	6,7	1.000	821	651	339	269	4,4031	1,2771
500	1800	30 455	7,6	1.144	938	742	385	304	4,8364	1,2865
600	600	10 555	2,8	433	358	286	153	122	2,3256	1,2301
600	800	14 555	3,9	567	468	374	198	158	2,9293	1,2395
600	1000	16 555	4,6	706	582	464	245	195	3,5035	1,2489
600	1200	20 555	5,7	851	700	557	293	233	4,0552	1,2583
600	1400	22 555	6,4	1.002	824	654	342	272	4,5890	1,2677
600	1600	26 555	7,5	1.160	953	755	393	312	5,1078	1,2771
600	1800	30 555	8,5	1.327	1.088	861	446	353	5,6140	1,2865
700	600	10 655	3,2	491	406	324	173	138	2,6367	1,2301
700	800	14 655	4,4	643	531	424	225	179	3,3211	1,2395
700	1000	16 655	5,2	801	660	526	278	221	3,9721	1,2489
700	1200	20 655	6,4	964	794	631	332	264	4,5976	1,2583
700	1400	22 655	7,2	1.136	934	741	388	308	5,2028	1,2677
700	1600	26 655	8,4	1.316	1.080	856	446	353	5,7910	1,2771
700	1800	30 655	9,7	1.505	1.234	976	506	400	6,3648	1,2865
800	600	10 755	3,6	547	452	362	193	154	2,9396	1,2301
800	800	14 755	4,9	717	592	472	251	200	3,7026	1,2395
800	1000	16 755	5,8	892	736	586	310	247	4,4283	1,2489
800	1200	20 755	7,1	1.075	885	704	370	294	5,1258	1,2583
800	1400	22 755	8,0	1.266	1.041	826	432	343	5,8004	1,2677
800	1600	26 755	9,4	1.467	1.204	954	497	394	6,4562	1,2771
800	1800	30 755	10,7	1.678	1.376	1.088	564	446	7,0960	1,2865
1000	600	10 955	4,2	656	543	434	231	185	3,5253	1,2301
1000	800	14 955	5,8	860	710	567	301	240	4,4404	1,2395
1000	1000	16 955	6,8	1.070	883	703	371	296	5,3108	1,2489
1000	1200	20 955	8,4	1.289	1.062	844	444	353	6,1472	1,2583
1000	1400	22 955	9,4	1.518	1.249	991	519	412	6,9563	1,2677
1000	1600	26 955	11,0	1.759	1.444	1.144	596	472	7,7428	1,2771
1000	1800	30 955	12,6	2.012	1.650	1.305	676	535	8,5100	1,2865
1200	600	10 1155	4,8	761	629	503	268	214	4,0896	1,2301
1200	800	14 1155	6,7	997	824	657	349	278	5,1511	1,2395
1200	1000	16 1155	7,8	1.242	1.024	815	431	343	6,1608	1,2489
1200	1200	20 1155	9,6	1.496	1.232	979	515	409	7,1311	1,2583
1200	1400	22 1155	10,8	1.762	1.449	1.150	602	478	8,0697	1,2677
1200	1600	26 1155	12,6	2.041	1.676	1.328	691	548	8,9821	1,2771
1200	1800	30 1155	14,5	2.334	1.914	1.514	785	621	9,8721	1,2865

Electronics

EHT-DC Electronic Thermostat

Main Specifications

- Compact design
- Electronic thermostat for towel warmers filled with water, water and glycol mixture or diathermic oil.
- Operation according to room temperature.
- Delicate PID temperature control.
- Temperature setting range 17..30°C
- Numeric LED display
- Off timer
- Frost protection function
- Built-in temperature sensor

Technical Specifications

- Protection class : IPx4
- Temperature setting range : 17....30°C
- Timer : 1....5 hour
- Supply voltage : 230V 50Hz
- Resistance power : Max 2000W
- Fuse : 6A
- Product colour : Black, white, chrome
- Cable colours : Black, white

Standards LVD

- EN 60335-1
- EN 60335-2-43
- EN 60335-2-30
- EN 62233

Standards EMC

- EN 55014-1
- EN 55014-2
- EN 61000-3-2
- EN 61000-3-3

EHT-LC Electronic Thermostat

Main Specifications

- Compact design
- Electronic thermostat for towel warmers filled with water, water and glycol mixture or diathermic oil.
- Operation according to room temperature.
- Delicate PID temperature control.
- Temperature setting range 17..30°C
- Numeric LCD display
- Weekly program
- Modes: ECO and BOOST
- Open window function
- Frost protection function
- Built-in temperature sensor

Technical Specifications

- Protection class : IPx4
- Temperature setting range : 17....30°C
- Timer : 1....5 hour
- Supply voltage : 230V 50Hz
- Resistance power : Max 2000W
- Fuse : 6A
- Product colour : Black, white, chrome
- Cable colours : Black, white

Standards LVD

- EN 60335-1
- EN 60335-2-43
- EN 60335-2-30
- EN 62233

Standards EMC

- EN 55014-1
- EN 55014-2
- EN 61000-3-2
- EN 61000-3-3

EHT-AC Electronic Thermostat

Main Specifications

- Compact design
- Electronic thermostat for towel warmers filled with water, water and glycol mixture or diathermic oil.
- Operation according to room temperature.
- Delicate PID temperature control.
- Temperature setting range 17..30°C
- LED display
- Off timer
- Frost protection function
- Built-in temperature sensor

Technical Specifications

- Protection class : IPx4
- Temperature setting range : 17....30°C
- Timer : 1....5 hour
- Supply voltage : 230V 50Hz
- Resistance power : Max 2000W
- Fuse : 6A
- Product colour : Black, white, chrome
- Cable colours : Black, white

Standards LVD

- EN 60335-1
- EN 60335-2-43
- EN 60335-2-30
- EN 62233

Standards EMC

- EN 55014-1
- EN 55014-2
- EN 61000-3-2
- EN 61000-3-3



Export Company

DAKO

Dako Dış Ticaret Limited Şirketi

Ahmet Nazif Zorlu Bulvarı No : 6
4th. Zone of Industrial Zone

Organised Industrial Zone of Manisa / Türkiye

Production Company



D Rad Isı Ürünleri Anonim Şirketi

Ahmet Nazif Zorlu Bulvarı No : 6
4th. Part of Industrial Zone

Organised Industrial Zone of Manisa / Türkiye



D Rad Isı Ürünleri Anonim Şirketi

**4th. Part of Industrial Zone, Ahmet Nazif Zorlu Bulvarı No : 6
Organised Industrial Zone of Manisa / Yunusemre / Manisa / Türkiye**

info@drad.com.tr